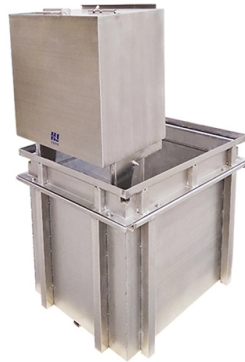


# Wiring routing for the three-level distribution box



## Overview

Wiring Direction: Wiring between the main circuit breaker and each branch circuit breaker in the box generally goes on the left, and the wiring out of the distribution box generally goes on the right. This ensures that electrical devices receive the necessary voltage and current, preventing overheating or insufficient power supply. A 3-conductor approach is standard for distributing electricity to an auxiliary system, where only three connections are needed—two hot lines and one neutral. Since the Utility distributes power from a Three Phase Transformer, a prime requirement regarded by the Utility company is to make sure that the. In this guide, we'll break down everything you need to know to install a distribution box correctly and confidently. Choose the right box based on environment (indoor/outdoor), load capacity, and durability. Check for proper IP/NEMA ratings and material quality.

## Article Content

### 3 Wire Sub Panel Wiring Diagram for Electrical Setup

Learn how to wire a 3-wire sub panel with this clear and detailed diagram. Step-by-step instructions for safe and reliable electrical installation.

### Understanding Circuit Breaker Wiring Configurations in ...

Master the safest and most efficient circuit breaker wiring configurations. Learn about single-phase vs. three-phase setups, safety standards, and future-proof electrical ...

### How to Wire a Distribution Board Step-by-Step

You'll learn how to connect the main switch, MCBs, neutral link, and earth bar, plus essential tips to avoid common wiring mistakes.

### Distribution Box Wiring Steps

Wiring Direction: Wiring between the main circuit breaker and each branch circuit breaker in the box generally goes on the left, and the wiring out of the distribution box generally goes on the ...

### Three Phase Distribution Board Wiring Guide

This document provides instructions for wiring a three phase distribution board for electrical power and lighting installation. It lists the required accessories including a 12-way three row distribution board ...

### The installation requirements for the distribution box

Learn how to install a distribution box safely and correctly. Covers wiring, placement, standards, and expert tips for a compliant setup.

### A Step-by-Step Guide to Wiring an Electrical Panel Box

Find out how to properly wire an electrical panel box with a comprehensive diagram and step-by-step instructions.

### Three (3) Phase Distribution Board Wiring Diagram and Connection

First of all, select the ratings of the MCCB and MCBs as per your load requirements. Identify the input and output terminals of the MCCB and MCBs. Connect all three phases from the ...

### Understanding Circuit Breaker Wiring Configurations in Distribution Boxes

Master the safest and most efficient circuit breaker wiring configurations. Learn about single-phase vs. three-phase setups, safety standards, and future-proof electrical planning.

### DIY Wiring a Three Phase Consumer Unit-Distribution ...

Wiring a Three Phase Distribution Board is of a necessity when the Power Distribution requirement cannot be handled by a Single Phase Power Supply.

### Step-by-Step Guide to Wiring a 3 Phase DB Box

Learn about the wiring process for a 3 phase distribution board (DB) box, including the necessary steps and safety precautions. Understand how to connect the incoming power supply, distribute it to ...

### DIY Wiring a Three Phase Consumer Unit-Distribution Board and Wiring ...

Wiring a Three Phase Distribution Board is of a necessity when the Power Distribution requirement cannot be handled by a Single Phase Power Supply.

## Contact Us

For more information, pricing, or custom solutions, please contact us:

Website: <https://www.budowasilesia.pl>

Email: [contact@budowasilesia.pl](mailto:contact@budowasilesia.pl)

Phone: +48 537 192 846

Address: ul. Chorzowska 45, 40-001 Katowice, Silesian Voivodeship, Poland

This document is for informational purposes only. Specifications subject to change without notice.

