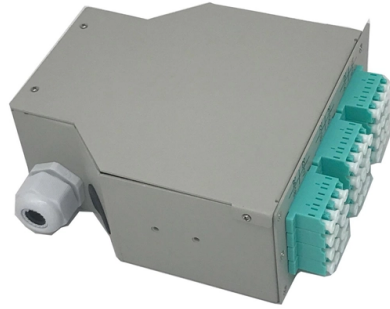


Wiring Standards for Level 2 Distribution Boxes



Overview

Check for proper IP/NEMA ratings and material quality. Ensure safe placement: install in dry, accessible areas with good ventilation and at appropriate height (typically ~1. In this guide, we'll break down everything you need to know to install a distribution box correctly and confidently. General requirements - Electrical continuity of metal raceways and enclosures. Metal raceways, cable armor, and. The National Electrical Code (NEC) provides comprehensive safety standards for electrical installations, including requirements for electrical panels (main service panels and subpanels or breaker box). 2 Setting and Removing Meters - None but duly authorized agents of the Company or persons authorized by law shall set or remove, turn on or turn off, or make any changes which will affect the accuracy of such meters. Vertical (Backbone) and Horizontal (workstation) cabling composed of Copper and Fiber Cabling, and support systems are covered under this.

Article Content

Overhead Distribution Construction Standards

DRESS THE MAJORITY OF CONSTRUCTION ISSUES. IT IS IMPERATIVE TO MAINTAIN STANDARDIZATION, AND THAT COMPLETED JOB ORDERS REFLECT ANY CHANGES ON THE ...

NEC Requirements for Panelboards and Load Centers

The National Electrical Code (NEC) provides comprehensive safety standards for electrical installations, including requirements for electrical panels (main service panels and subpanels or breaker box).

The installation requirements for the distribution box

Learn how to install a distribution box safely and correctly. Covers wiring, placement, standards, and expert tips for a compliant setup.

Electric Service Standards

This publication, FPL's Electric Service Standards (ESS), is intended to furnish information often required by customers and their agents (builders, architects, engineers, electricians, etc.) to receive ...

2024 Electric Service Requirements Manual (LADWP)

This manual is for electronic distribution only and is designed to provide you with the most current information on the Los Angeles Department of Water and Power's (Department) service equipment ...

Class I Division 2 Requirements Using NEMA 4 or 4X Enclosures ...

If your application falls under Class I Division 2 (CID2) hazardous location ratings, and you're considering NEMA 4 or 4X enclosures, this guide will help you navigate compliance confidently.

1926.405

Feeders shall originate in a distribution center. The conductors shall be run as multiconductor cord or cable assemblies or within raceways; or, where not subject to physical damage, they may be run as ...

WAC 296-46B Electrical Safety Standards, Administration, and ...

Wiring methods for designated building occupancies.

..... 12 Traffic management systems. ...

telecommunications_technical_wiring_standards

Vertical (Backbone) and Horizontal (workstation) cabling composed of Copper and Fiber Cabling, and support systems are covered under this document.

Distribution Technical Standards and Guides

The purpose of the advisory notice [PDF, 232 KB] is to draw the attention of developers and owners of multiple occupancy buildings, and their electrical consultants and contractors to the ...

Contact Us

For more information, pricing, or custom solutions, please contact us:

Website: <https://www.budowasilesia.pl>

Email: contact@budowasilesia.pl

Phone: +48 537 192 846

Address: ul. Chorzowska 45, 40-001 Katowice, Silesian Voivodeship, Poland

This document is for informational purposes only. Specifications subject to change without notice.

