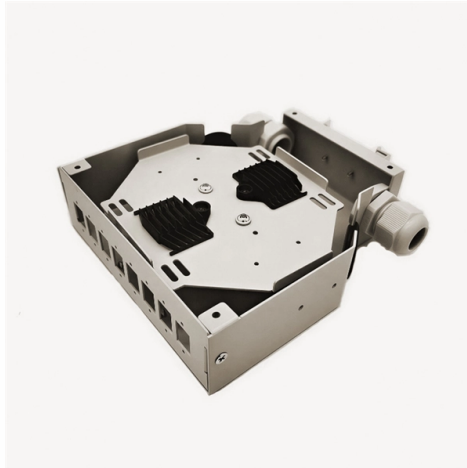


Techniques for disassembling electrical distribution boxes



Overview

When dismantling electrical conduit and boxes, all straps and supports must be removed, and it is important to plug existing openings from junction boxes and gear to national code requirement. Proper lockout/tag out procedures must be followed when dismantling electrical systems. For transformers, substations, and all electrical gear, it is recommended that the gear be grounded. ↵ "Electrical Box Wire Disassembly" Tutorial ↵ Welcome to our YouTube channel! In this detailed tutorial, we'll guide you through the process of safely disass. This article will introduce the concepts of circuit breakers and distribution boxes to readers, as well as how to remove circuit breakers from distribution boxes. At the same time, we will explain the precautions that need to be taken before disassembly, and use practical cases to combine the. Some of your ED equipment is designed to minimise the risk and severity of your employees' accidents or processes breakdown, such as circuit-breakers, fuse-contactors, etc. However, panel distribution board may need to be replaced due to long-term use, environmental factors, or equipment failure. Whether you're a seasoned DIY enthusiast or simply looking to understand the procedure, this guide will provide a clear roadmap to ensure a smooth and safe transition.

Article Content

Dismantling Electrical Systems

When dismantling electrical conduit and boxes, all straps and supports must be removed, and it is important to plug existing openings from junction boxes and gear to national code requirement.

How to replace a panel electrical box

You need to be careful not to damage the wires or connectors during disassembly. Also, you'll want to remember the location of each wire and connector so you can connect it correctly when ...

How to safely remove circuit breakers from distribution boxes

However, there are situations where you may need to pull out the circuit breaker from the distribution box. This article will provide step-by-step guidance on how to remove circuit breakers in a manner ...

Electrical Task Analysis Document: Electrical Demolition

This document contains task-specific conditions and recommendations compiled from onsite observations and interviews with electrical workers and industry practitioners.

**Electrical Panel Replacement: 12 Steps for Safe Upgrade

In this comprehensive 12-step guide, we aim to shed light on the process of electrical panel replacement. Whether you're a seasoned DIY enthusiast or simply looking to understand the ...

DIY Electrical Panel Replacement: 10 Simple Steps

When replacing an electrical panel yourself, follow a 10-step tutorial that includes safety measures, turning off the main power, removing the old panel, disconnecting and reconnecting wires, installing ...

Electrical Distribution Maintenance Services Guide

These solid, modern maintenance techniques and practical approaches have the potential to become a key competitive advantage in your businesses. This requires establishing new habits and defining ...

How to remove circuit breaker from panel box?

This article will introduce the concepts of circuit breakers and distribution boxes to readers, as well as how to remove circuit breakers from distribution boxes.

Electrical Box Wire Disassembly

✂ "Electrical Box Wire Disassembly" Tutorial ✂ Welcome to our channel! In this detailed tutorial, we'll guide you through the process of safely disass...

How to Replace a Breaker Box | Homeowner's Guide to ...

A circuit breaker box is responsible for distributing electricity safely throughout your home. We show you how to replace a breaker box and stay safe.

Contact Us

For more information, pricing, or custom solutions, please contact us:

Website: <https://www.budowasilesia.pl>

Email: contact@budowasilesia.pl

Phone: +48 537 192 846

Address: ul. Chorzowska 45, 40-001 Katowice, Silesian Voivodeship, Poland

This document is for informational purposes only. Specifications subject to change without notice.

