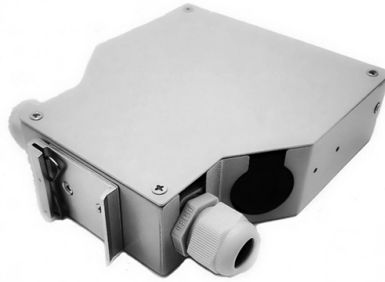


# State Grid Fiber Optic Communication Network



## Overview

You can use this map to review and report broadband speeds and look up information about available broadband services. The map will be updated continuously to improve its accuracy through a combination of FCC verification efforts, new data from Internet. Welcome to NTIA Broadband Analytics and Monitoring (NBAM). Show me range to terrestrial fiber nodes on the map?

Is the ITU building in Geneva Switzerland within 10 km of a fibre node?

Start measuring on the map to see calculations here. The map is the first release in an ongoing, iterative process that will depend on data submitted by providers, challenges from third parties and the public, and. GeoTel is a trusted resource of fiber maps and telecom datasets for infrastructure developers, government agencies, and various organizations looking to leverage accurate and up-to-date data for their operational, financial, and network planning needs, and much more. GeoTel is the single leading. These points identify buildings or structures - such as a home, apartment building, or small business - where internet services are, or could be, available.



## Article Content

[Interactive broadband map | Broadband for All](#)

You can use this map to review and report broadband speeds and look up information about available broadband services.

[Broadband Data Collection Consumer Information](#)

The Fixed Broadband Map shows the fiber, cable, DSL, satellite, or fixed wireless internet services available at each home or small business on the ...

[Fact Sheet National Broadband Map](#)

ACT SHEET: National Broadband Map On November 18, 2022, the FCC released the pre-production draft of the National Broadband Map. The National Broadband Map displays where internet services are ...

[California Interactive Broadband Map](#)

[Interactive Broadband Map Data as of December 31st, 2024 HOW-TO Use the Map](#)

[Home | FCC National Broadband Map](#)

The map will be updated continuously to improve its accuracy through a combination of FCC verification efforts, new data from Internet providers, updates to the location data, and—importantly—information ...

[GeoTel | Fiber Maps and Telecom Data](#)

GeoTel offers digital metro fiber maps and telecom data solutions, including data centers and detailed fiber routes for strategic infrastructure insights.

[Broadband Data Collection Consumer Information | Federal Communications ...](#)

The Fixed Broadband Map shows the fiber, cable, DSL, satellite, or fixed wireless internet services available at each home or small business on the map. When you select a point on the map, ...

[Broadband Analytics and Monitoring](#)

NBAM is managed and maintained by the National Telecommunications and Information Administration (NTIA) in partnership with 55 state and territory broadband offices and nine federal agencies. Scroll ...

[Broadband Data Collection](#)

The FCC is in the process of updating its current broadband maps with more detailed and precise information on the availability of fixed and mobile broadband services.

[National Broadband Map | BroadbandNow](#)

Its projects have included building out fiber optic rings, deploying broadband in industrial parks and business incubators, and piloting emerging broadband technologies. Most ARC project grants ...

## Contact Us

For more information, pricing, or custom solutions, please contact us:

Website: <https://www.budowasilesia.pl>

Email: [contact@budowasilesia.pl](mailto:contact@budowasilesia.pl)

Phone: +48 537 192 846

Address: ul. Chorzowska 45, 40-001 Katowice, Silesian Voivodeship, Poland

This document is for informational purposes only. Specifications subject to change without notice.

