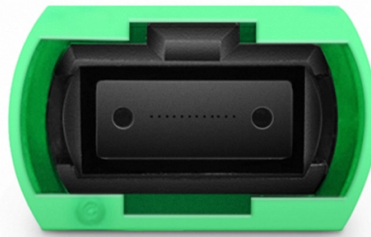


# **Specifications of the Suspended Platform Distribution Box**



## **Overview**

This control box features overload protection, emergency stop, phase loss protection, limit switch compatibility, and intuitive operation buttons, providing maximum safety and efficiency in high-altitude work environments. The suspended platform control box is a high-performance electrical control system, the core power source designed specifically for the ZLP series suspended platform and various aerial work platform. Designed to ensure centralized control, it integrates high-quality electrical components. The latest electric box for suspended platform is designed more reasonably. The model perfectly suited to lightweight applications such as painting and decorating, refurbishing, jointing and repairs, windows cleaning etc. For welding, cleaning and painting of large ships. Suitable for the installation of high-rise building billboards.

## Article Content

### ZLP630 Suspended Platform – Europe Rigid

The complete system consists of the working platform equipped with two electric LTD hoists and the support wheels, suspended by means of steel wire ropes from a suspension structure.

### Suspended Platform Electric Control Box

With multiple safety protection features, this control unit offers reliable performance in demanding construction and maintenance applications. Suspended Platform Electric Control Box ensures safe ...

### ZLP630/ZLP800 Suspended Platform Electric Control Box

This control box features overload protection, emergency stop, phase loss protection, limit switch compatibility, and intuitive operation buttons, providing maximum safety and efficiency in high-altitude ...

### ZLP800 Suspended Platform Manual | PDF | Switch | Electric Motor

This document provides installation, operation and maintenance instructions for Shenxi ZLP series temporarily installed suspended access equipment. It includes details on the equipment's main ...

### Electric control box for suspended working platform

If you need more detailed information about a particular suspended platform electrical control box, please provide the make and model, or any specific questions you have regarding its operation or ...

### Suspended Platform Electric Box Control Panel Distribution Box

The enclosure of the electrical box is thickened overall, with all units either galvanized or painting, ensuring durability and resistance to corrosion. Internal wiring within the electrical box has been ...

### Cheap Suspended Platform Control Boxes

Basic yet reliable, this control box uses standard electrical components such as contactors, relays, fuses, and terminal blocks to manage platform movement. Ideal for straightforward lifting operations, ...

### Electric control box for suspended platforms

The electric control box is an important part which uses electronic components from well-known manufacturers, like CHINT and SCHNEIDER brand. The electrical control box supplied by ...

### Suspended Platform Electric Box Control Panel ...

The enclosure of the electrical box is thickened overall, with all units either galvanized or painting, ensuring durability and resistance to corrosion. Internal ...

### Suspended Scaffolding Accessories-Skyliftec

With its wide range of technical specifications, safety features and customization options, it is ideally suited for a variety of applications in the construction and maintenance industry.

### ZLP800 Suspended Platform Manual | PDF | Switch

This document provides installation, operation and maintenance instructions for Shenxi ZLP series temporarily installed suspended access equipment. It includes ...

## Contact Us

For more information, pricing, or custom solutions, please contact us:

Website: <https://www.budowasilesia.pl>

Email: [contact@budowasilesia.pl](mailto:contact@budowasilesia.pl)

Phone: +48 537 192 846

Address: ul. Chorzowska 45, 40-001 Katowice, Silesian Voivodeship, Poland

This document is for informational purposes only. Specifications subject to change without notice.

