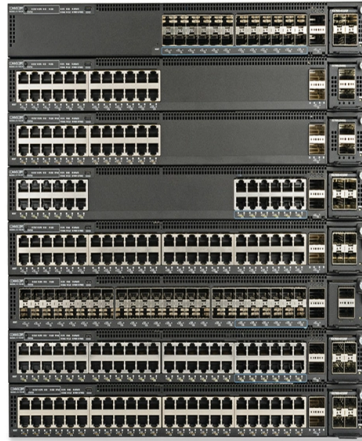


How to troubleshoot loops on an access switch



Overview

To stop a network loop, enable the Spanning Tree Protocol (STP) or Rapid Spanning Tree Protocol (RSTP) on your switches to ensure a loop-free topology. Utilize switch features like BPDU Guard, Root Guard, and Loop Guard to prevent loops. This document describes how to identify and troubleshoot layer 2 loops in networks including Catalyst 9000 series switches. The information in this. Switching loops occur when network switches are connected together in such a way that network traffic loops around infinitely instead of traversing the hops needed to travel from source to destination. If left unresolved, network loops can disrupt communication, slow down network performance, and even crash switches or. The problem happening is that the core switch is disabling one uplink configured as a lag to one of the edge cabinets, when viewing the logs on the core, i found the below : LOOP DETECTION: VLAN 102, port lg110 detect, putting into err-disable state after disabling, reenabling the lag ports on the. Used to have a WRT54, then three WRT54 with Tomato in "mesh" operation, so to speak, Then an Asus router with three access points, then a Fritzbox, four access points with several managed netgear switches, but I've never had anything as unreliable and unstable as my current OmadaSDN, and the whole. This article describes how to troubleshoot issues with the Spanning Tree Protocol (STP).

Article Content

Troubleshoot Layer-2 Loops on Catalyst 9000 Series ...

This document describes information to help identify the source of Layer 2 loops and provide safeguards to prevent them in the future.

Switching Loops: The Best Practices To Avoid Them

Switching 101How Loops HappenTroubleshooting A Switching LoopPreventing Switching LoopsConclusionAs the saying goes, “an ounce of prevention is worth a pound of cure.” Knowing how to identify the source of a switching loop is a good skill to have, but ideally, a network administrator will want to leverage protocols and technologies that prevent switching loops from occurring. See more on catchpoint tech-now.io

Fix Network Loops: Step-by-Step Guide - tech-now.io

If left unresolved, network loops can disrupt communication, slow down network performance, and even crash switches or routers. This guide will help you detect ...

Loop detection again and again on different switches and ports

Sometimes the bad Ethernet cable may also make a loop, so it's suggested to check the cable that connected to your switch port 8 (according to the picture the loop happens on port 8) And ...

Troubleshooting Spanning Tree

Out of the box spanning tree does a fine job creating a loop-free topology. There are a number of things that could go wrong, maybe you expect a certain output but your switches are telling you something ...

Technical Guide: FortiSwitch Spanning Tree Protocol (STP ...

Spanning Tree Protocol (STP) is a link-management protocol to enable a layer 2 loop-free topology. STP enables a network to have redundant paths for fault tolerance while ensuring there are ...

Troubleshooting Guidelines for Layer 2 Loops

Troubleshooting Guidelines for Layer 2 Loops How to Identify a Loop How to Quickly Remove a Loop How to Quickly Remove a Loop How to Find Out the Root Cause How to Perform ...

Fix Network Loops: Step-by-Step Guide

If left unresolved, network loops can disrupt communication, slow down network performance, and even crash switches or routers. This guide will help you detect and fix network loops using Spanning Tree ...

Solved: RUCKUS Forums

In Loose Mode, loop detection is configured on the VLAN basis. Loose Mode disables the port if packets originate from any port or VLAN on the same device. So please configure the loop ...

6 Common Spanning Tree Problems and How to Avoid Them

Fix: Enable STP on all switches to ensure your network is protected against loops. Instead of disabling STP due to delays, use the PortFast feature on Cisco switches (or equivalent ...

Switching Loops: The Best Practices To Avoid Them

Understand how switching loops are created and learn the best practices for preventing them using the spanning tree protocol and portfast mode.

How to Stop a Network Loop

To stop a network loop, enable the Spanning Tree Protocol (STP) or Rapid Spanning Tree Protocol (RSTP) on your switches to ensure a loop-free topology. Utilize switch features like BPDU Guard, ...

Contact Us

For more information, pricing, or custom solutions, please contact us:

Website: <https://www.budowasilesia.pl>

Email: contact@budowasilesia.pl

Phone: +48 537 192 846

Address: ul. Chorzowska 45, 40-001 Katowice, Silesian Voivodeship, Poland

This document is for informational purposes only. Specifications subject to change without notice.

