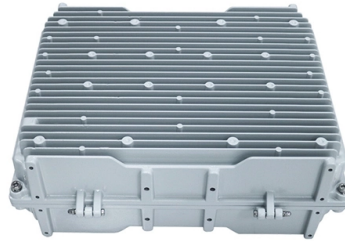


How to suspend cables for cable trays in vertical shafts



Overview

Support Methods: Common support methods include trapeze hangers, which are used for ceiling suspensions, and cantilever wall brackets, which are mounted directly to walls for runs along vertical surfaces. The choice depends on the building structure and the planned tray route. Griplock's inverted "Y" cables and tool-free adjustable Grippers are perfect for suspending most Cable Tray Systems. Whether you're looping over unistrut or attaching to 1/4-20 or 3/8-16 deck studs, our gated hook lock-on system snaps securely to most wire mesh, ladder, trough, channel, and. In suspended applications, freely moving cables (for electrical energy, signals, hydraulics, pneumatics, etc. When the system moves, the cables start to vibrate and can collide with system components and, in the worst case, break off. Cable ladder systems and cable tray systems shall be manufactured in accordance with BS EN 61537, channel support. There are three items which require decisions concerning the tying down of multiconductor cables in cable tray wiring systems.

Article Content

Cable Tray Systems | Cable Hanging Suspension

The acclaimed Griplock® Cable Suspension System lets you adjust the height of each suspension point in seconds without tools, cutting hours out of normal ...

A Guide to Installing and Supporting Electrical Cable Trays

This guide covers the critical steps, from selecting the right electrical cable tray and performing accurate cable fill calculations to managing a safe cable pull through and ensuring all bonding and grounding ...

Cable carriers -How to Install a Cable Carrier Vertically

As with vertical standing applications, the two most important factors to consider in a vertical hanging application are how the cables are installed and how they are secured at the cable carrier end points.

Best Practice Guide to Cable Ladder and Cable Tray Systems

This guide covers cable ladder systems, cable tray systems, channel support systems and associated supports intended for the support and accommodation of cables and possibly other electrical ...

Best Fixing and Mounting Options for Cable Trays | CMW

Discover the best fixing and mounting options for cable trays and wire mesh basket trays. CMW shares tips for efficient cable management.

Cableizer

There are different ways to do such an installation, for example using a second steel wire for breaking or by pushing instead of pulling the cable using multiple synchronized cable pushers ...

Cable Tray Systems | Cable Hanging Suspension | Griplock Systems

The acclaimed Griplock® Cable Suspension System lets you adjust the height of each suspension point in seconds without tools, cutting hours out of normal installation times.

Tie Down Practices for Multiconductor Cables in Cable Trays

Where cables drop from the cable trays to equipment enclosures, it may be desirable to anchor the cables to the last one, two or three rungs before the drop depending on the size of the cables.

Hanging Tough with Vertical Cable Supports

Designed specifically to support cables in vertical raceways and eliminate strain on terminations, the supports can make the difference between being connected or disconnected in multi-story buildings. ...

Vertical suspended applications with energy chain

This is why energy chains are used here, which both protect the individual cables and enable guided movement of the bundled cables. Our tips will show you what to look out for in a suspended application.

Contact Us

For more information, pricing, or custom solutions, please contact us:

Website: <https://www.budowasilesia.pl>

Email: contact@budowasilesia.pl

Phone: +48 537 192 846

Address: ul. Chorzowska 45, 40-001 Katowice, Silesian Voivodeship, Poland

This document is for informational purposes only. Specifications subject to change without notice.

