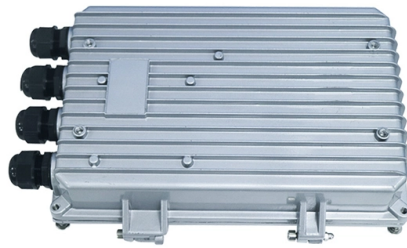


How far from the factory is the electrical distribution box installation location



Overview

This is the area directly above and in front of the panel, extending from the floor to 6 feet above the top of the equipment. Nothing unrelated to the electrical installation can occupy this zone — no plumbing, no ductwork, no gas piping, and no storage shelves. The NEC, published by the National Fire Protection. Is distance satisfactory to protect power distribution boxes (breaker boxes, disconnects ranging from anywhere from 50 volts to 440 volts) from damage in active warehouses with stacked material, fork truck traffic, and pedestrian traffic; or does there need to be a protective barrier?

If distance. Choose based on where you'll install the box. Inside the box, you'll find things like circuit breakers, busbars, terminal blocks, and wires. NEC Article 408 covers switchboards, switchgear, and Panelboards installation and applications. After the electrical installation in warehouse construction The installation of electrical systems during the construction of pre-engineered warehouses and factories plays a vital role in overall project quality, especially when integrated with shed fabrication processes to ensure safety, accuracy. This electrical wiring article series discusses safe an InspectAPedia tolerates no conflicts of interest. We have no relationship with advertisers, products, or services discussed at this website. - Daniel Friedman, Publisher/Editor/Author - See WHO ARE WE?

d code-required working space and.



Article Content

Electrical Panel Clearance Distance FAQs

There is not a standard electrical code requirement that gives the minimum clearance distance between an electrical panel and a plumbing fixture, but you can figure a minimum distance from plumbing to ...

NEC Requirements for Panelboards and Load Centers

Clearance: Electrical panels must be installed in a readily accessible area with a minimum clearance of 30 inches (762 mm) wide, 3 ft (36 inches or 914 mm) deep, and 6.5 feet (\approx 2 meter) high in front of ...

Electrical DB, SMDB, and MDB Installation Guide

The document provides a method statement for installing electrical distribution boards (DB), sub-main distribution boards (SMDB), and main distribution boards (MDB).

NEC + OSHA Electrical Panel Clearance Requirements

Most people think only about the area directly in front of the electrical panel. While this is the most commonly accessed area, it is often necessary to also have space above the panel and on ...

Electrical Clearances: Requirements and Safe Distances

Every electrical panel, breaker box, meter base, and service disconnect needs a clear working zone in front of it so that someone can safely operate the equipment or respond to an ...

The installation requirements for the distribution box

Introduction
Understanding The Components of A Distribution Box
Selecting The Right Distribution Box
Site Preparation and Location Requirements
Electrical Connections and Wiring
Compliance with Standards and Regulations
Conclusion
What Is a Distribution Box?
A distribution box, also known as a power distribution unit, is a critical component in any electrical system. It is the control center for electricity in your home or business. It takes the electrical power coming into the building and distributes it to different circuits. Each circuit then powers various device...
Why Proper Installation Matters
Installing a distribution box correctly is about more than just making sure the lights turn on. It's about safety, efficiency, and reliability. A poorly installed distribution box can lead to a host of problems. These include electrical fires, short circuits, and even complete power failures. Proper installation ensures tha...
See more on eabel
Published: Feb 7, 2025
Electrical Technology

NEC Requirements for Panelboards and Load Centers

Clearance: Electrical panels must be installed in a readily accessible area with a minimum clearance of 30 inches (762 mm) wide, 3 ft (36 inches or 914 mm) deep, ...

Q& A: Is distance satisfactory to protect electrical disconnects?

In this EHS Hotline Q& A, an EHS Hero subscriber asked whether distance is satisfactory for protecting power distribution boxes (breaker boxes, disconnects ranging from anywhere from 50 ...

Factory and Warehouse Electrical Construction Procedure

Identify the location for installing the electrical system: This includes the positioning of electrical panels, transformers, wiring systems, outlets, switches, etc., suitable for the warehouse ...

Electrical Panel Mounting Requirements (Dictated by the NEC)

The National Electrical Code provision 110.26 clarifies that electrical boxes must be supplied with at least 3 feet of free space surrounding them for safety measures.

The installation requirements for the distribution box

In this guide, we'll break down everything you need to know to install a distribution box correctly and confidently. Choose the right box based on environment (indoor/outdoor), load ...

How to confirm whether the installation location of the electrical ...

Ensuring that the installation location of the box is reasonable is the basis for ensuring the safe and efficient operation of the system. The following are some key steps and considerations to ...

Contact Us

For more information, pricing, or custom solutions, please contact us:

Website: <https://www.budowasilesia.pl>

Email: contact@budowasilesia.pl

Phone: +48 537 192 846

Address: ul. Chorzowska 45, 40-001 Katowice, Silesian Voivodeship, Poland

This document is for informational purposes only. Specifications subject to change without notice.

