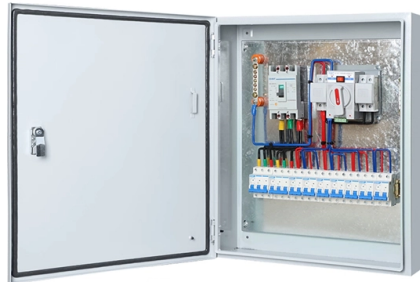


Core issue Communication failure with access switch



Overview

Troubleshoot the connectivity issues of a switch by diagnosing the wired network. Check latency with ping test or track packets with traceroute test. I have recently deployed 2 cisco 9500-48Y4C core switches and a stackwise virtualization configuration is implemented on the core switches. that same SFP is working on the 1st. And in terms of redundancy, is it common to run two SFP connections from access switch to core to form an etherchannel?

Or does this seem unnecessary?

I would want to create redundancy somehow where if one of the access switches in its stack dies, the entire stack doesn't go offline but I'm not. So, when the active core switch (switch 1) suddenly failed, it crippled connectivity across the entire 6-floor headquarters. All the employees were cut off from critical apps, email, phones - everything was down. I. "DoD's enterprise capability of DoD-owned and -leased telecommunications and computing subsystems, networks, and capabilities, centrally managed and configured by DISA, to provide an integrated network with cybersecurity, telecommunication, computing, and application services and capabilities. However, various issues can lead to Network Communication Failure, impacting both network performance and user productivity.

Article Content

Troubleshooting Switch Connectivity Issues

Troubleshoot the connectivity issues of a switch by diagnosing the wired network. Check latency with ping test or track packets with traceroute test.

Best practices when configuring an Access switch stack to Core switch ...

Make sure the core switch is the root bridge, and enable portfast and BPDU guard on all access interfaces. Do your routing on the core switch, with an L3 transit to the firewall.

Core Switch and Access Switch Crisis

We have a Huawei Core switch and a Dlink plug and play switch before the new Huawei Access switch was deployed. I discovered that everyone on the Core Switch and Dlink Switch is all ...

DISN Connection Process Guide

The DISN CAO analyst will not issue a Cloud Permission to Connect (CPTC) for a C-ITP connection request if the Mission Owner's submission is incomplete, or if there is an issue that the Mission ...

Cisco 9500-48Y4C core and access switch Connectivity Issue

I have recently deployed 2 cisco 9500-48Y4C core switches and a stackwise virtualization configuration is implemented on the core switches. but the some ports of the second core switch on ...

Network Communication Failure and Troubleshooting Guide

This guide covers common causes and solutions for network communication problems, from managed switch configurations and limited port availability to resource sharing errors and IP ...

Network Switch Troubleshooting Guide: Common Problems and ...

A comprehensive switch troubleshooting from the physical layer to the data link layer to the network layer to find out why your network switch is not working.

Core Switch vs. Distribution Switch vs. Access Switch

Comprehensive guide to Core, Distribution, and Access Switches. Roles in the network and important parameters explained.

Troubleshooting War Stories: Part 2

The solution to reviving this core switch was unbelievable. Let's take a closer look at the infrastructure and the troubleshooting case.

Contact Us

For more information, pricing, or custom solutions, please contact us:

Website: <https://www.budowasilesia.pl>

Email: contact@budowasilesia.pl

Phone: +48 537 192 846

Address: ul. Chorzowska 45, 40-001 Katowice, Silesian Voivodeship, Poland

This document is for informational purposes only. Specifications subject to change without notice.

