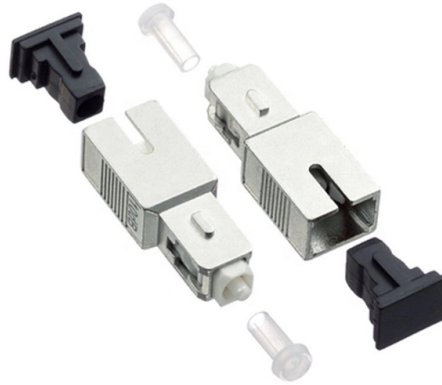


Circuit Setting Regulations for Distribution Boxes



Overview

This standard describes requirements for numbering and labeling of real property electrical distribution equipment, circuits, and site lighting at Lawrence Livermore National Laboratory. Ensure safe placement: install in dry, accessible areas with good ventilation and at appropriate height (typically ~1. Practice good wiring: secure grounding, neat cable management, proper insulation, and correct wire gauge and breaker size. □□ Specification Insight: NEC 312. 2 requires outdoor distribution boxes to have rain-tight enclosures when installed in. This subpart addresses electrical safety requirements that are necessary for the practical safeguarding of employees in their workplaces and is divided into four major divisions as follows: (a) Design safety standards for electrical systems. These regulations are contained in §§ 1910. The table below shows why these.

Article Content

Outdoor Electrical Distribution Box Specifications: NEC Article 312

Complete specification guide for outdoor electrical distribution boxes covering NEC Article 312 requirements, NEMA ratings, sizing calculations, and selection criteria for commercial and ...

Circuit Numbering and Labeling for Electrical Equipment

This standard describes requirements for numbering and labeling of real property electrical distribution equipment, circuits, and site lighting at Lawrence Livermore National Laboratory.

NEC Article 110.34: Electrical Room "Basics"

Minimum clearances are established for work spaces in front of high voltage - electrical equipment such as switchboards, control panels, switches, circuit breakers, switchgear and motor controllers. These ...

The installation requirements for the distribution box

Learn how to install a distribution box safely and correctly. Covers wiring, placement, standards, and expert tips for a compliant setup.

CHAPTER 39 POWER AND LIGHTING DISTRIBUTION

ICC Digital Codes is the largest provider of model codes, custom codes and standards used worldwide to construct safe, sustainable, affordable and resilient structures.

Design requirements and standards for low voltage distribution boxes

Design requirements for low voltage distribution boxes cover NEC, IEC, and safety standards to ensure reliable, compliant electrical installations.

eCFR :: 29 CFR Part 1910 Subpart S -

Sections 1910.302 through 1910.308 contain design safety standards for electric utilization systems. Included in this category are all electric equipment and installations used to provide electric power ...

A Complete Guide to NEC Article 314 on Electrical Boxes and Conduit ...

NEC Article 314 establishes requirements for the installation and use of electrical boxes, conduit bodies, fittings, and handhole enclosures.

Design requirements and standards for low voltage ...

Design requirements for low voltage distribution boxes cover NEC, IEC, and safety standards to ensure reliable, compliant electrical installations.

NEC + OSHA Electrical Panel Clearance Requirements

Electrical panels are an essential component in any facility. Learn about requirements + best practices for keeping circuit boxes clear.

Latest Requirements for Distribution Box Installation under the US ...

The latest NEC updates prioritize adaptive solutions for modern energy demands. With homes now packing solar arrays, EV chargers, and smart-home systems, distribution boxes work harder than ...

Contact Us

For more information, pricing, or custom solutions, please contact us:

Website: <https://www.budowasilesia.pl>

Email: contact@budowasilesia.pl

Phone: +48 537 192 846

Address: ul. Chorzowska 45, 40-001 Katowice, Silesian Voivodeship, Poland

This document is for informational purposes only. Specifications subject to change without notice.

