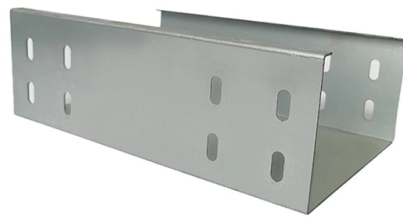


Calibration of Benchtop Insertion Loss Tester in Uzbekistan



Overview

This process consists of several stages. At this stage, the measuring device is being prepared for calibration. Maybo LLC is an authorized distributor of global brands including Fluke, Trimble, Keysight, Flir, Fujikura, Exfo, Olympus and others. Maybo Service Center provides expert maintenance and repair of electrical and laboratory equipment, delivering high-quality service to all clients. Courses in. •Compact benchtop instrument for all-in-one operation optic components quickly and accurately. With a dual two wavelengths in less than 1 second. ILM-100 system comes integration into test systems. The ILM-100 was designed to measure. Rheology and Impact Testing Systems Accessories View All Products Services Calibration On-site and factory calibration services for your materials testing systems System Relocation Services include calibrations, deinstallation, and reinstallation Training Designed to meet the needs of machine. (MPO/MTP) mandrel free insertion loss test station is specially design for multi fiber testing. It realized mandrel-free return loss measurement on the multi-fiber, and without matching gel for the MM measurement.

Article Content

Calibration Laboratory

Our laboratory is well-equipped with high-quality testing and calibration strategies and professional and experienced engineers. As ISO/IEC 17025:2017 certified, we adhere to the quality of service we ...

OPTOTEST OP815 INSTRUCTION MANUAL Pdf Download | ManualsLib

The recommendation is made based upon statistics on detector aging; however it is up to the metrology policies and procedures within each company to define the calibration cycles on optical power meters.

Attenuation (Insertion Loss) Troubleshooting and Testing

If you test the insertion loss of a Category 5e channel, for instance, the insertion loss needs to be verified for signals ranging from 1 MHz to 100 MHz. For Category 8 links the frequency range is 1 ...

Maybo Uzbekistan - Test & Measurement Solutions

Courses in electrical testing, molecular biology, immunology, biosafety, bio-protection, and technical skill development by certified instructors. We provide ISO/IEC 17025-accredited calibration services for ...

Manuals | Instron

Explore the complete library of Instron product guides and manuals to help you operate and maintain your testing equipment.

Insertion Loss Meter (ILM-100) | Santec Holdings Corporation

The ILM-100 was designed to measure insertion loss on fiber optic components quickly and accurately.

Verification and calibration of measuring instruments

We offer professional services that meet the highest quality standards and legal requirements. The verification and calibration process includes a comprehensive check and adjustment of your ...

Anritsu and Polar Instrument Solution for Delta-L 4.0 ...

A step-by-step guide is provided to perform calibration and measurement to show a "pass" or "fail" result of the device under test. An operator does not need to know how a VNA or Delta-L algorithm works.

Return Loss & Insertion Loss Testing

Tech Optics offers a range of return loss and insertion loss test equipment in single channel, multichannel and bi-directional configurations. Contact us to discuss your application with our ...

Bench-top Insertion Loss and Return Loss Tester IL/RL Tester for ...

Bench-top Insertion Loss and Return Loss Tester IL/RL Tester for Multi-mode Fiber 850/1300nm (MPO/MTP) mandrel free insertion loss test station is specially design for multi fiber testing.

Contact Us

For more information, pricing, or custom solutions, please contact us:

Website: <https://www.budowasilesia.pl>

Email: contact@budowasilesia.pl

Phone: +48 537 192 846

Address: ul. Chorzowska 45, 40-001 Katowice, Silesian Voivodeship, Poland

This document is for informational purposes only. Specifications subject to change without notice.

